



**WATER, MILLS
& MARSHES**

Water, Mills and Marshes: the Broads Landscape Partnership

Newsletter No. 7 October 2017

Our scheme

Helping to preserve and protect the distinctive drained marsh landscape, Water, Mills and Marshes covers an area of 200Km² and links the urban hubs of Norwich, Acle, Great Yarmouth, Lowestoft, Beccles and Loddon.

“What begins as undifferentiated space becomes place as we get to know it better and endow it with value.”

Yi-Fu Taun (1977)
Space and Place: the perspective of experience

Get involved

If you would like to talk about a project, if you are part of a local group that may be able to help deliver an activity in your local area or if you just want to be kept informed please let us know.

To talk about a project, please contact 01603 610734, if you would like to be added to the mailing list send us an [email here](#)

Leaving the page and becoming reality...

We are delighted to announce we have received a confirmed National Lottery grant of £2,437,500 from the Heritage Lottery Fund (HLF) through its Landscape Partnership program for the Water, Mills and Marshes.

This valuable funding, made possible by National Lottery players, will be matched alongside £1,519,999 from other partnership contributions to provide £3,957,499 enabling us to deliver 38 individual projects over a 5-year period which will enrich and promote heritage sites in and around the Broads National Park.

Water, Mills and Marshes will officially start on the 1st January 2018 and will run until the end of December 2022. But here is a taste of what we will be getting up to over the next 5 years.

Roadshows, learning experiences, awards and more

We want young people to truly understand and enjoy the Broads but we know financial and timing restraints often preclude schools from being able to do as much as they would like and give their pupils the opportunity to discover a real sense of place.

Heritage Lottery funding enables us to solve these issues and we have designed a high quality, fully funded programme, delivered by education experts, resourced with a host of technical equipment AND its own bus to enable young people to get to and from the wide variety of experiences we are offering

If you are interested in anything from School roadshows, Broads experience trips, classroom activity sessions, public showcasing events, Broads National Park Awards, Student volunteering, Broads Young Rangers or the Digital Biathlon contact us.



Social Media



[@Broads_LPS](#)



[WaterMillsandMarshes](#)



[Water_Mills_Marshes](#)



[Water,Mills and Marshes](#)

Heritage skills and drainage mill restoration

By the end of 2022 we will have carried out restoration work to 12 of the iconic Broads drainage mills. This work to drainage mills needs a lot of different skills – everything from carpentry, joinery and brick work, to painting and decorating.

We are working with City College Norwich to add heritage skills training modules as stretching tasks for students engaged in modern construction courses and then getting them out on site working on our drainage mills.

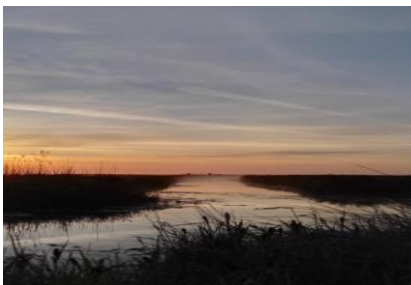
Construction site works and student training will be managed by the WMM Clerk of Works and overseen by Ben Hogg, Broads Authority Historic Environment Manager.



Walk on the wild side

For a landscape that's almost entirely man-made the Broads are surprisingly wild. There's a wealth of wildlife, some of it not found anywhere else in the UK. Whether it's the bittern skulking in the reed beds whose booming call echoes for kilometers, an otter dashing along a riverbank or the delicate beauty of a darting dragonfly.

Working with partners, we will be providing training at nature reserves across the Broads. This will include surveying and recording the wildlife clearing scrub plants to allow native species to thrive and creating habitats for wading birds across the grazing marshes.



We will also be running community open events to help encourage people to explore their local area and discover new places to visit. People can also learn how to look after their own local [WildPatch](#) and see which creatures are visiting by borrowing one of our camera traps.

Contact:

Will Burchnall
Programme Manager

will.burchnall@broads-authority.gov.uk

tel: 01603 610734

What next?

The scheme will officially start on the 1st January 2018. We are currently in the process of recruiting the project team, building websites and planning activities. For up to the minute information, see our [Twitter](#) and [Facebook](#) feeds. For more information about the Scheme, [send us an email](#).

